

Minnesota Organization on Fetal Alcohol Syndrome



Understanding Fetal Alcohol Spectrum Disorders in the Treatment Setting

Sierra Asamoa-Tutu
Program Coordinator and Trainer
sierra@mofas.org



MINNESOTA ORGANIZATION ON FETAL ALCOHOL SYNDROME (MOFAS)

Our mission is to eliminate disability caused by alcohol consumption during pregnancy and to improve the quality of life for those living with Fetal Alcohol Spectrum Disorders throughout Minnesota.



Our vision is a world in which women do not drink alcohol during pregnancy and people living with Fetal Alcohol Spectrum Disorders are identified, supported, and valued.

Objectives

- Describe how prenatal alcohol exposure can affect a person throughout the life span
- Explain the relevance Native American history to health disparities that exist today
- Name three ways treatment programs can be modified for clients with FASD
- Discuss strategies that be used to prevent FASD in the future and support those living with FASD now





FASD Throughout the Life Span

What are Fetal Alcohol Spectrum Disorders?

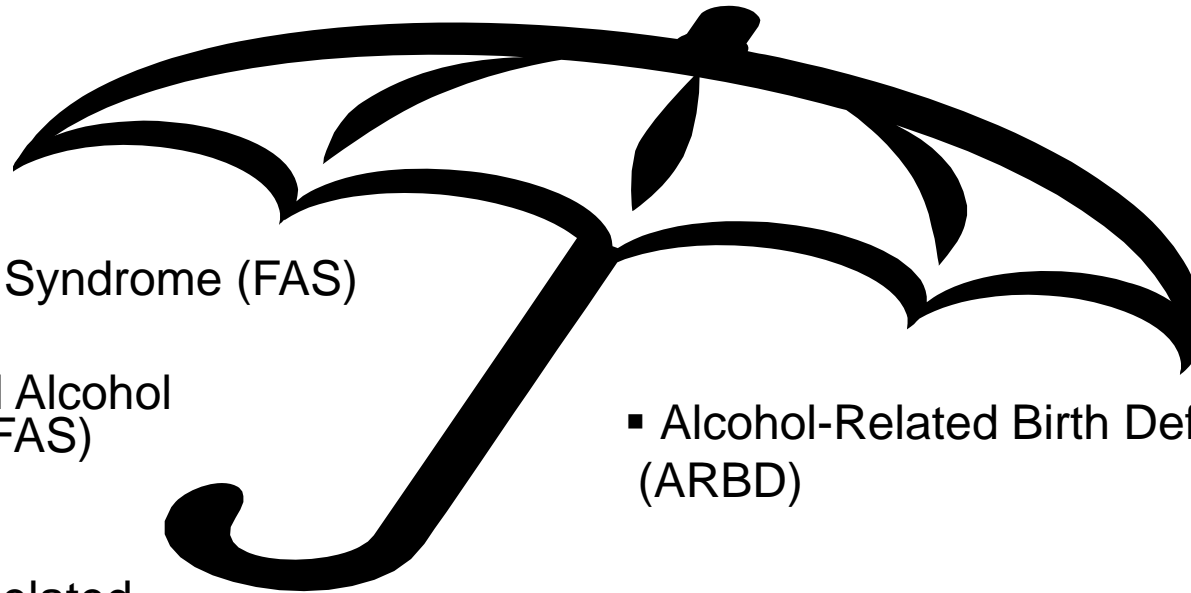
“A set of physical, behavioral, and cognitive disorders seen in individuals exposed to alcohol prenatally”

Lifetime disability with brain injury that never goes away

Broad range (spectrum) of characteristics that vary from person to person

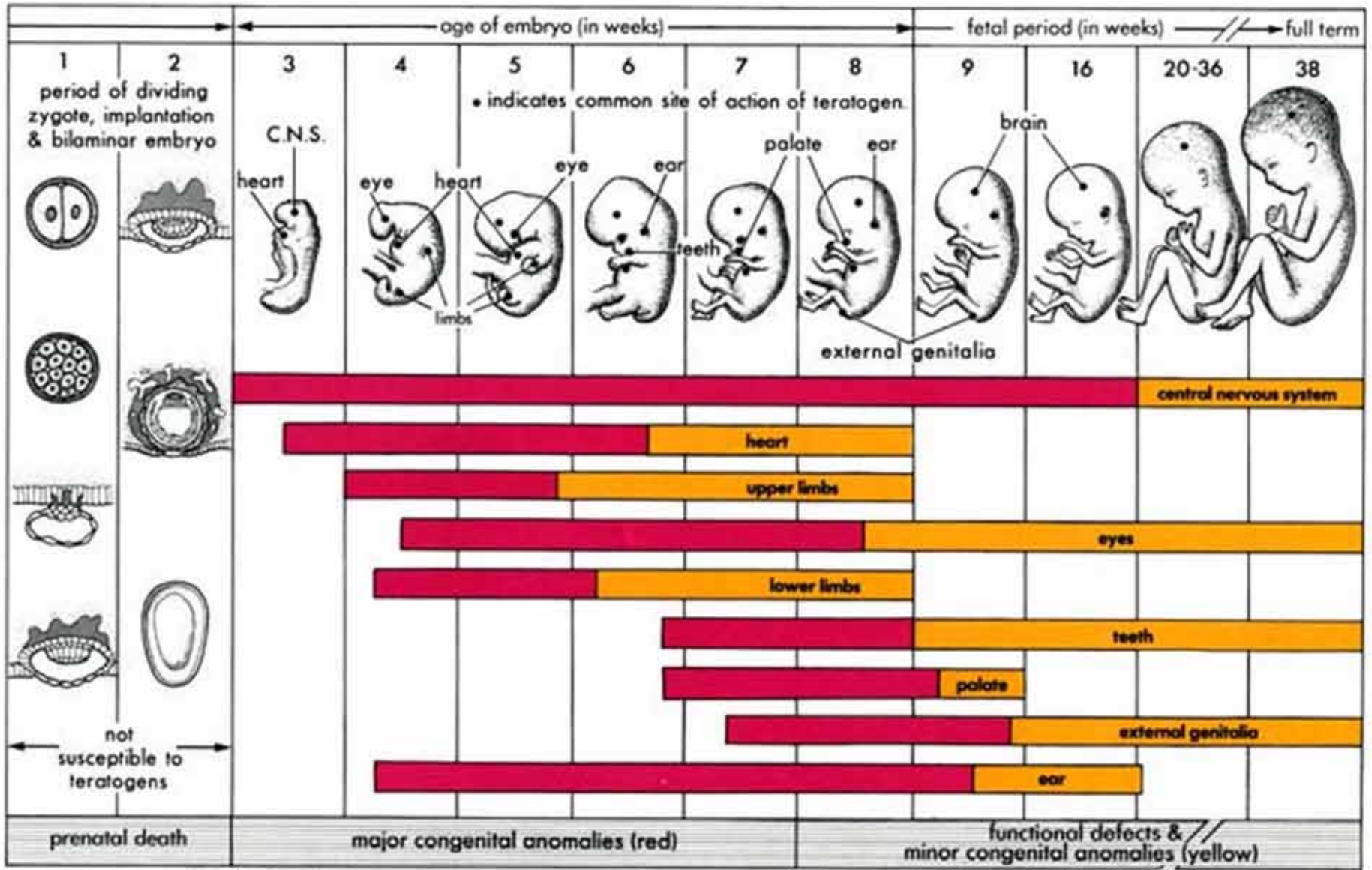


The FASD Umbrella



- Fetal Alcohol Syndrome (FAS)
- Partial Fetal Alcohol Syndrome (pFAS)
- Alcohol-Related Neurodevelopmental Disorder (ARND)
- Alcohol-Related Birth Defects (ARBD)
- Fetal Alcohol Effects (FAE)
replaced by ARBD & ARND in 1996





Variables

- Timing of exposure
- Blood alcohol concentration of the mother, binge drinking
- Resiliency of fetus
- Metabolism and diet of the mother
- Birth order
- Other health/environmental factors



Characteristic FAS Facial Features



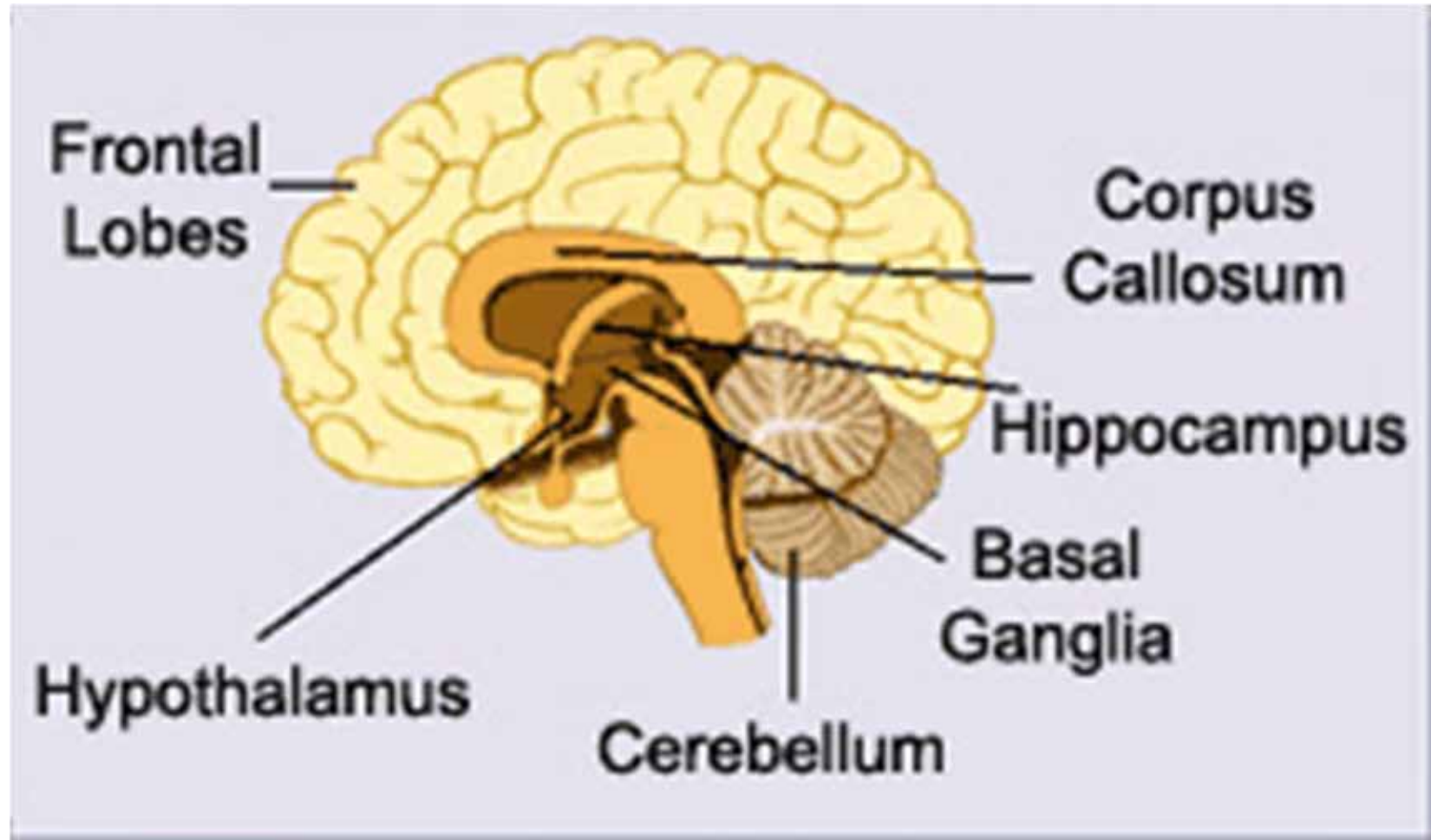
Source:
American
Family
Physician Vol.
72/No. 2 (July
15, 2005) 10



Spring 2011

MN Organization on Fetal Alcohol
Syndrome

Most Affected Areas of the Brain



Frontal Lobe Functions

- Understanding connection between future consequences and current actions
- Impulse control & decision making
- Judgment, problem solving
- Generalizing learning
- Perceptions, complex or abstract concepts
- Emotional response & self awareness
- Ability to delay gratification for long term goals
- Attention, being “tuned in”
- Understanding social cues, nuance



Increased Risk for Lifelong Complications

- Wrong treatment or intervention is used
- Unemployment
- Increased Substance Abuse
- Loss of family
- Homelessness
- Jail
- Premature Death



Citation: Streissguth, A.P., Barr, H.M., Kogan, J. & Bookstein, F. L., "Understanding the Occurrence of Secondary Disabilities in Clients with Fetal Alcohol Syndrome (FAS) and Fetal Alcohol Effects (FAE)," Final Report to the Centers for Disease Control and Prevention (CDC), August, 1996, Seattle: University of Washington, Fetal Alcohol & Drug Unit, Tech. Rep. No. 96-06, (1996).



Generational Cycle

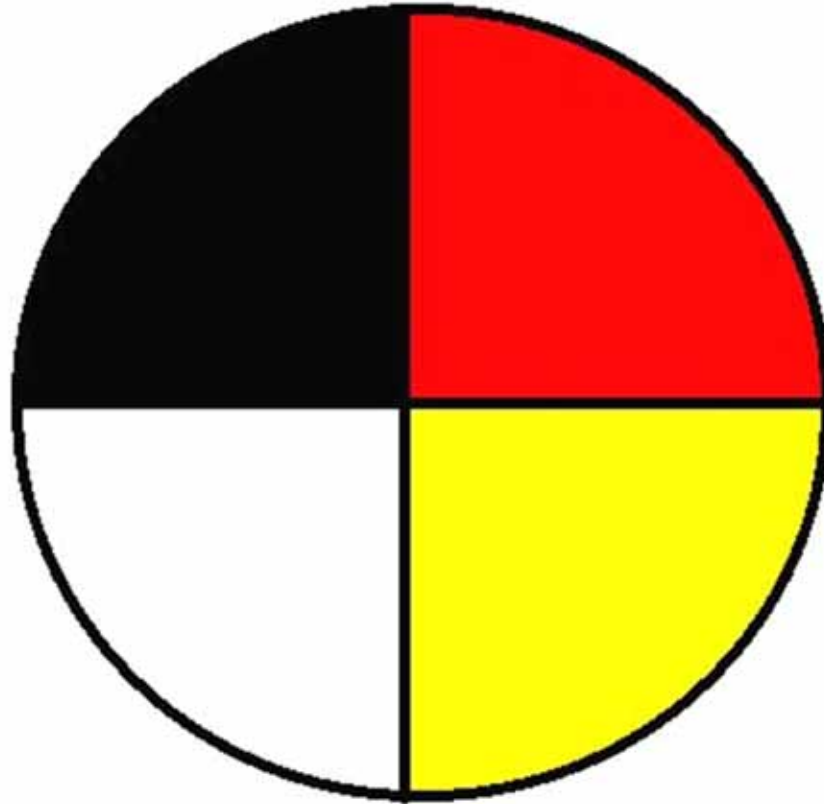
In a sample of 30 females with FASD who had given birth,

- 57% no longer were caring for their children
- 40% reported drinking during pregnancy
- 17% of the children were diagnosed with FASD
- 13% of the children were suspected of having FASD

Lack of foresight, poor impulse control and poor judgment often lead to unprepared life events



The Medicine Wheel





FASD in Context of Native American History

Native American Culture?

- There are 562 Federally recognized tribes across the U.S. and each is unique
- Alcohol problems and other health disparities are shared across many tribes- these are NOT part of our culture
- Stereotypes



FASD Among Native Americans

- When alcohol was introduced, it came in such a way that it began to destroy the traditional way of life.
- Today, Native Americans have some of the highest rates of FAS in the Nation
- The prevalence of FAS in Alaska is 5.6 per 1,000 live births compared with 1.5 per 1,000 in the State overall



History of Health Services

- Sterilization without informed consent - until 1976
- Surgical experimentation (leaving 1000's blind)
- "Insane asylums" and public shows - majority not mentally ill, many medicine people
- Biological effects of oppression and racism
- 1 in 3 urban Indians have no health care



Why is it Important to Address Alcohol Use?

- Alcohol related death is 5 times more likely in Native Americans
- Higher rates of liver disease and drunk driving
- Youth engage in more risky behaviors such as binge drinking





Modifying Treatment for clients with FASD

Screening

- Build trust and safety
- Change the way you ask questions from the T-ACE and TWEAK
- Be aware that *any* drinking is risk drinking for a pregnant woman!
- Brief intervention for identification and referral

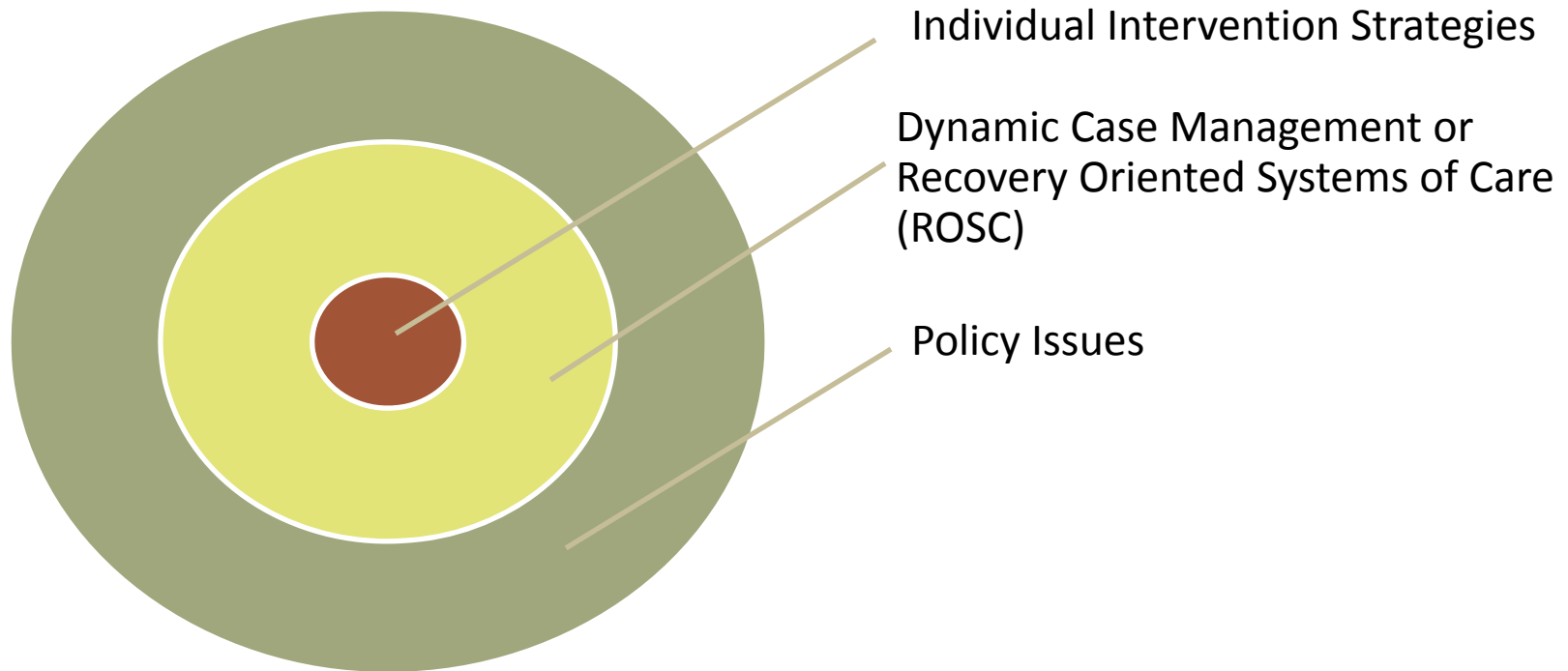


Referral

- If a pregnant woman cannot stop using, support her to find treatment and encourage her to enlist outside help (*Prevention*)
- If a client is showing signs of possible FASD, encourage them to schedule an evaluation (*Diagnosis & Intervention*)
- If a client discusses drinking during her pregnancy, encourage evaluations for the children.



Circles of Care



Those strategies furthest from the center result in the most damage when not in place

From the FASD Regional Training Center and Mountain West ATTC- curriculum for training addiction treatment professionals, Module II pp.27-31. (2010)



Change of Perspective

“We must move from viewing the individual as failing if he or she does not do well in a program to viewing the program as not providing what the individual needs in order to succeed”



Dan Dubovsky, FASD Center for Excellence

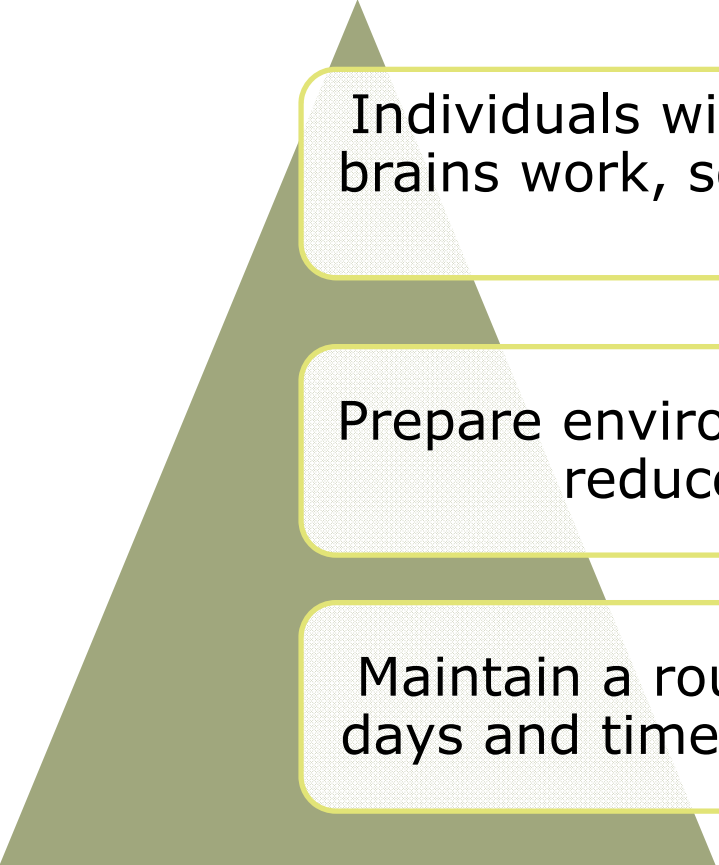


Co-occurring Disorders

- FASDs are rarely a stand-alone diagnosis
- It should not be seen as a separate issue
- Other diagnoses including substance abuse are affected by and should be treated as UNDER and PART OF the brain damage.
- Treatment plans should consider deficits & needs



Modify the Environment



Individuals with FASD cannot change how their brains work, so we must adapt the environment to them

Prepare environment to avoid sensory overload, reduce distractions to attention

Maintain a routine, set consistent appointment days and times. Plan for changes & transitions.



Motivational Interviewing

- Help them process all of the information in the session while they are with you
- Provide more help with decision making
- Use lists & visuals
- Make abstract concepts concrete
- Keep records of everything





Strategies for Prevention & Intervention

Healing Through Prevention

- Preventing alcohol abuse during pregnancy is a powerful way to protect future generations
- We are all responsible for making sure that all children have a healthy start
- Accountability for one another in family & community



Healing Through Intervention

The strategies that we teach around working with individuals affected by FASD fall very closely in line with many tribal cultural values.



- Generosity
 - Respect
 - Courage
 - Connection with nature
-
- What are your cultural values?



Traditional Parenting

- Self-exploratory vs. Punitive
- Bottom-up support vs. Top-down expectations
- Active, hands-on
- Children are sacred gifts



Professional Paradigm Shift

FROM:

TO:

Assuming

Observing

Punishing

Preventing problems

Changing people

Changing environments

High expectations

Appropriate expectations

Failure

Success

Diane Malbin, M.S.W.





Contact Information:

MOFAS

www.mofas.org

Email:

sierra@mofas.org

Phone: 651-917-2370